

TORTORIS[®]

A NEW BRAND IS BORN

BORRN

TOO

CUT

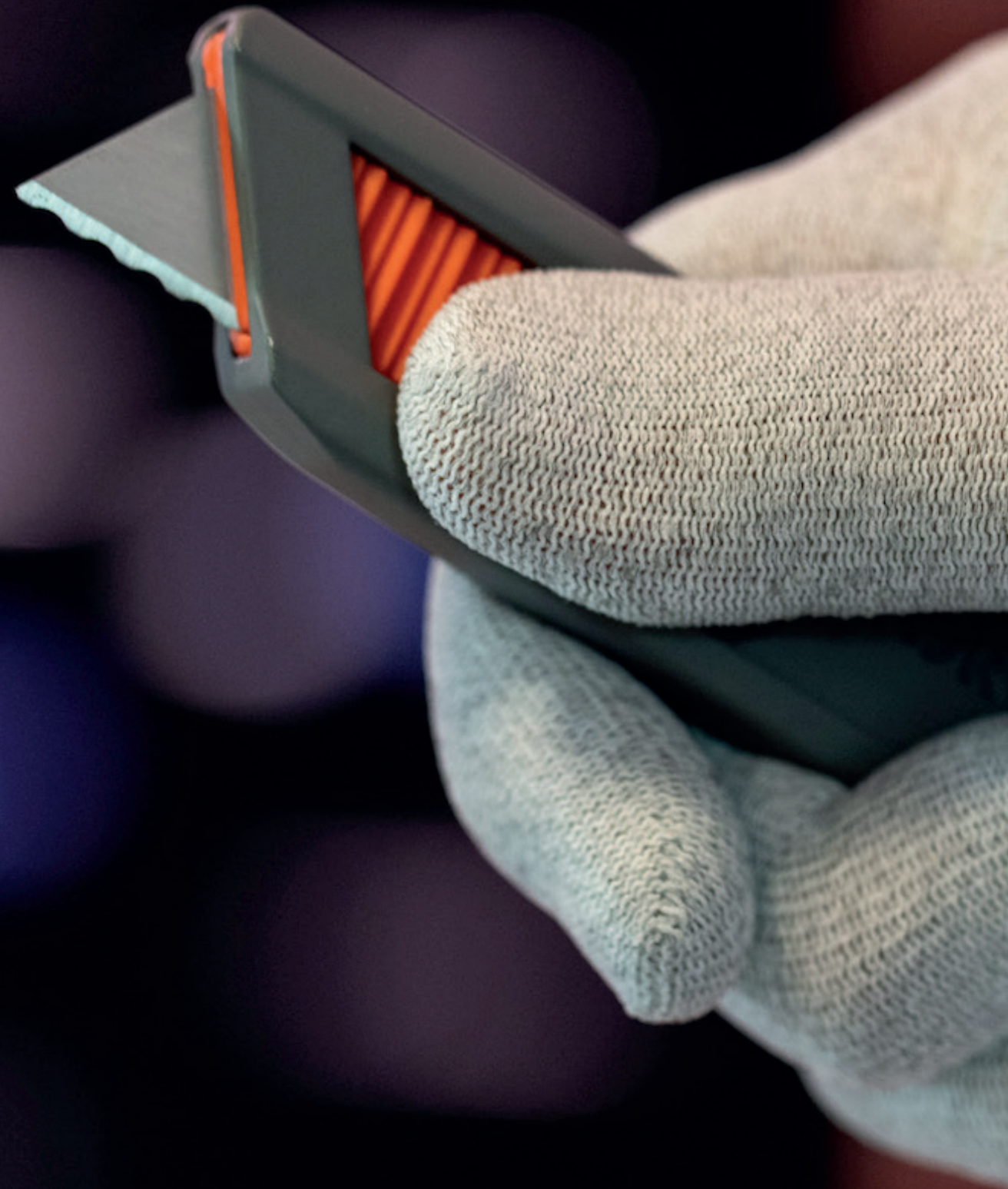
TORTORIS[®]

**SAFETY
KNIVES**

TORTORIS[®]

A FULL RANGE OF CUTTING SOLUTIONS

Whether your workers need to cut through double wall corrugate with ease, open boxes with care or quickly replace the blade, Tortoris offers a cutting solution that works for everyone on the team. Discover our safety knives to improve the day-to-day demands of your operation.



TORTORIS[®]

PERFECT FOR ALL YOUR CUTTING APPLICATIONS

First of all, Tortoris' safety knives are manufactured in Europe, so quality is guaranteed. This unique range of safety cutters is especially designed to reduce injuries in the workplace and to prevent high medical costs for employers. Tortoris was created by three men with many years of experience in the cutting industry, so they know the benefits of a well invented safety knife better than anyone else. Check them out!



TORTORIS®

UNIQUE SAFETY TECHNOLOGY

S

Automatic blade
retraction
High safety

ES

Fully automatic
blade retraction
Extra high safety

US

Concealed blade
**Ultra/Maximum
safety**

- FOR SAFE CUTTING OF FILM AND PAPER ROLLS
- THICKER MATERIALS • CARDBOARD
- SLABBING • BAGGED GOODS

TORTORIS®

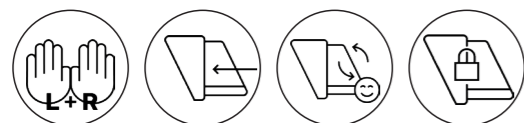
GOODS PROTECTION • REDUCES INJURIES





**S
21**

SAFE 21 ADJUSTABLE AUTO-RETRACTABLE KNIFE



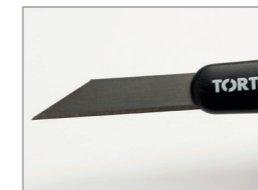
FEATURE



Self-retractable



Adjustable blade exposure



Precision cutter



Durable and lightweight



Tool-free blade change

SPECIFICATIONS

Order No	S21
Customs tariff number	82119300
Knife size (L*W*H)	165 x 17 x 11 mm
Weight knife	17 g
Handle materials	ABS + carbon steel
Blade material	Carbon steel
Blade size	
Cutting depth	0-14 mm

PACKAGE

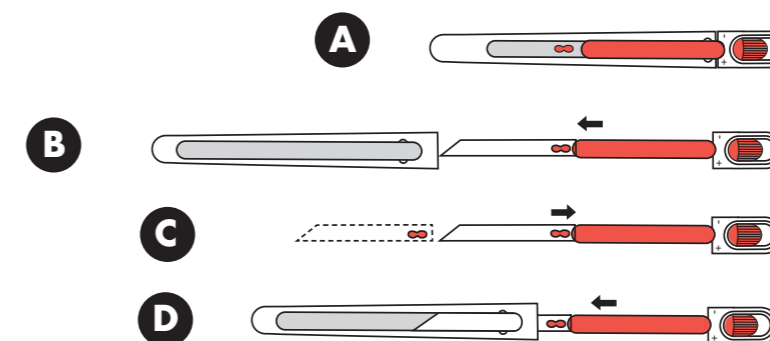
Package unit	1 in plastic bag
Qty in inner box	10 pcs in a box
EAN Code box	9505443655646

REPLACEMENT BLADE



SB009P
0,63 mm, TIN-coated

BLADE CHANGE



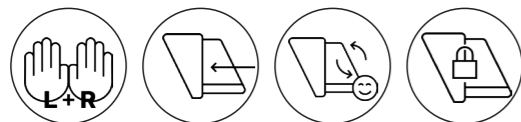
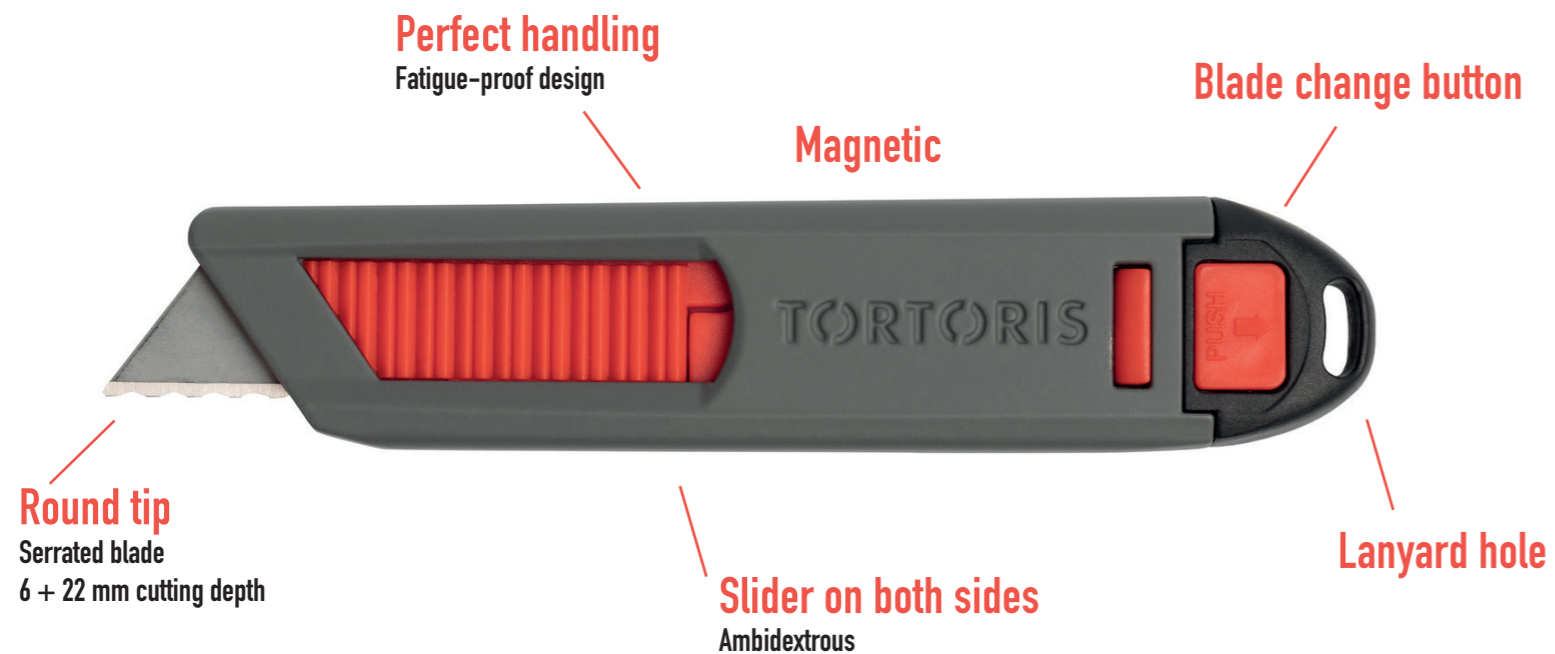
VIDEO **S
21**



Enjoy Safety
Use **TORTORIS®**



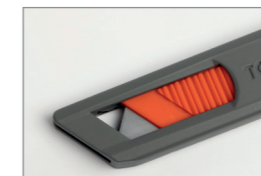
S10 **SAFE 10** AUTOMATIC BLADE RETRACTION



FEATURE



Safety lock



Ambidextrous

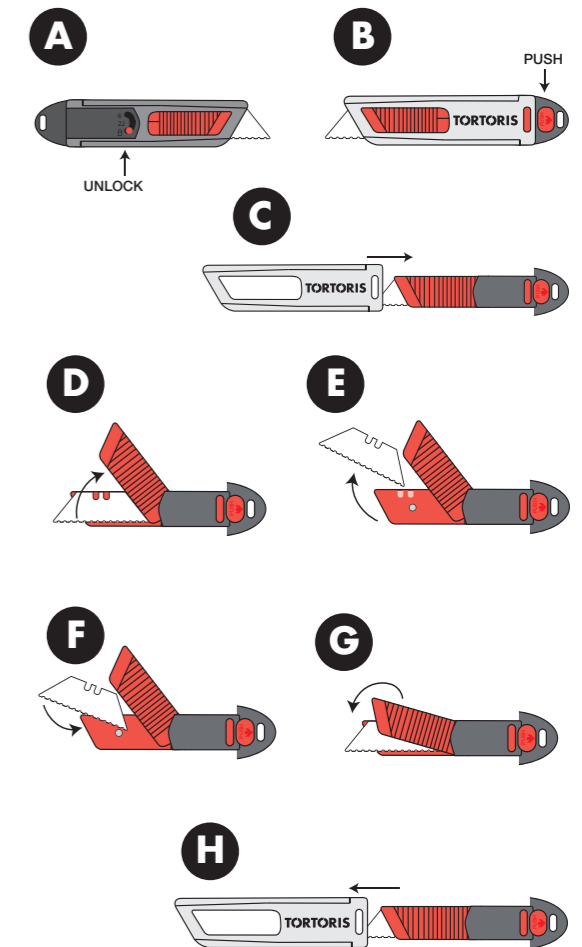


Tool-free blade change



Blade length

BLADE CHANGE



SPECIFICATIONS

Order No	S10
Customs tariff number	82119300
Knife size (L*W*H)	140 x 30 x 15 mm
Weight knife	0,06 kg
Handle materials	Aluminum alloy material NGF (Nylon + Glas Fiber)
Blade material	carbon steel
Blade size	51 x 18 x 0,6 mm
Cutting depth	22 mm

REPLACEMENT BLADE



B1-S
0,63 mm

PACKAGE

Package unit	1 in box
Qty in inner box	10 pcs
EAN Code single unit box	9507185197613

VIDEO **S10**



Enjoy Safety
Use **TORTORIS®**



TORTORIS[®]

CONTACT

JUSKY

Nowohucka 1/2

54-617 Wrocław - Poland

www.jusky.pl

info@tortoris.pl